

ELMWOOD FRAMELESS ALL PLY BOX CONSTRUCTION
 CEILING HEIGHT = 107"
 WALL CABINETS HUNG AT 90" & 96" WITH OPEN
 SOFFIT - CROWN MOLDING EK402 W/ NAILER ON TOP OF CABINETS
 DOORSTYLE: IMPERIAL 2 1/4" RAIL, 54 RAISED PANEL, G EDGE, PAINT GRADE
 BARISTA DUSK FINISH FOR ISLAND COMPONENTS
 STONEDUST DUSK FOR PERIMETER
 DM/ACT 15EK24 / 1" /G BOTTOM-G T FOR LIGHT VALANCE
 DECORATIVE ENDS WHERE INDICATED (#) CABINET FACE ALIGNMENT

NOTES:

1-SPACE FOR BOSCH COUNTER DEPTH REFRIGERATOR MODEL # B36CT81SNS BETWEEN PANELS: 36" W X 72" H X 25" D 96" STACKED WAINSCOT AS PANEL ON RIGHT SIDE; 36" W X 24" H WALL CABINET HUNG BETWEEN PANELS

2-BASE CABINET FOR BUILT IN THERMADOR MICRODRAWER MODEL # MD24WS IN FLUSH INSTALLATION- FILLER PROVIDED FOR SIDE CLEATS CABINET DRAWER BELOW CUTOUT

3-DOUBLE STACKED ROLL OUTS BEHIND DOORS

4-BASE OPEN CABINET W/ APPLIED SPLIT POST STYLE F ON LEFT & RIGHT RAILS NO SHELVES

5-CUSTOM MANTLE WOOD HOOD , 42" W X 30" H X 21" D FOR ZEPHYR MONSOON I ONE PIECE LINER (34 3/8" W X 19 1/4" D X 12" H) MODEL # AK9234AS - BLOWER NOT TO EXCEED 390 CFM- HUNG AT OVER THERMADOR 36" GAS PRO HARMONY RANGE MODEL #PRG366WH

6-BASE FULL HEIGHT DOOR CABINET BETWEEN TALL BASE ALIGNED CABINET 16" D

7-TALL PANTRY CABINETS WITH BASE ALIGNED BOTTOM DOORS, ADJUSTABLE SHELVING IN TOP SECTION, ROLLOUTS IN LOWER SECTION

8-SPACE FOR UNDER COUNTER REFRIGERATOR THERMADOR # T24UR910RS - SPACE REQUIRED = 24 1/4" W

9-OUTLET SPACE FOR ISLAND ACCESS & UNDERCOUNTER FRIDGE OVERLAY FILLER BELOW PAINTABLE OUTLET COVER- COVER FINISHED IN BARISTA DUSK FINISHAT FACTORY - RGA REQUIRED

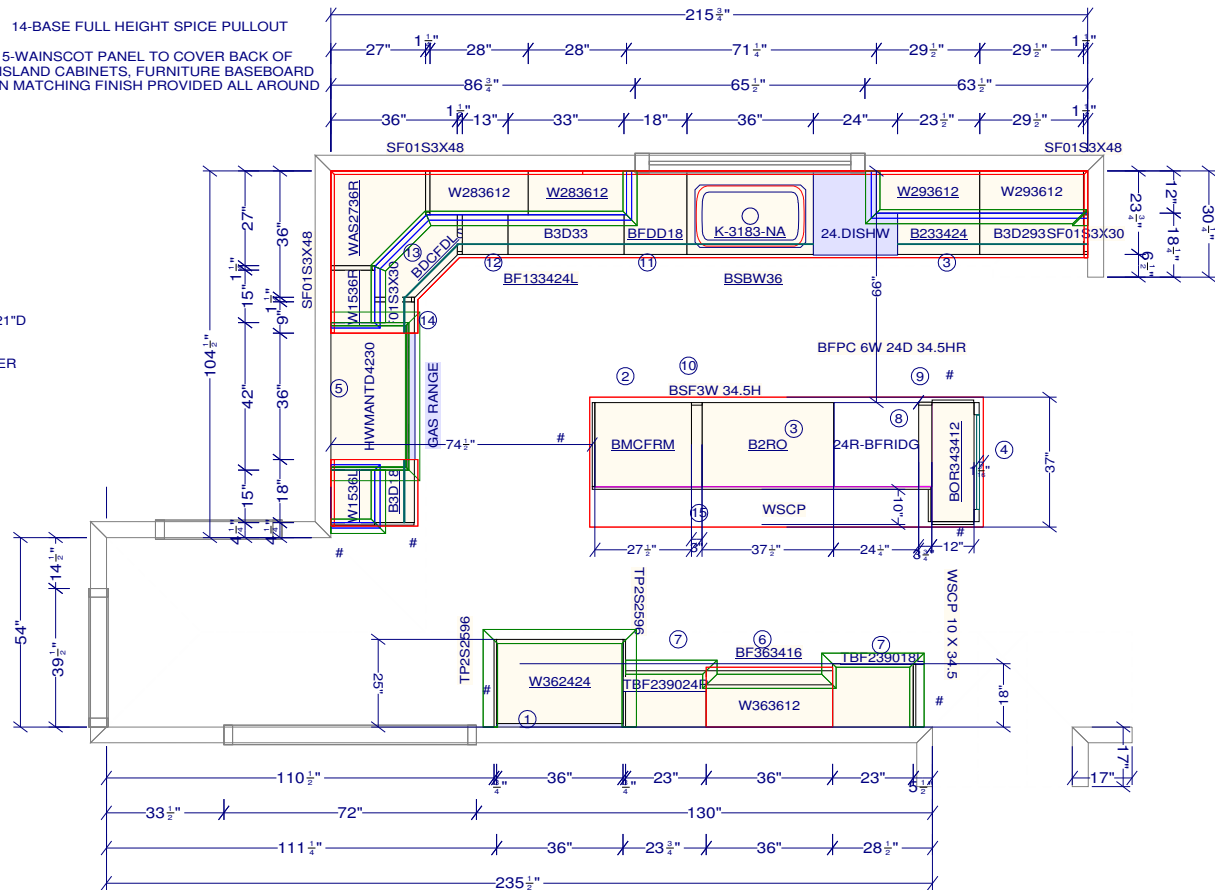
10-OUTLET SPACE FOR ISLAND ACCESS & MICRODRAWER, OVERLAY FILLER BELOW PAINTABLE OUTLET COVER- COVER FINISHED IN BARISTA DUSK FINISH AT FACTORY - RGA REQUIRED

11-BASE FULL HEIGHT DOOR W/ DOUBLE 50 QT WASTE PULLOUT

12-BASE FULL HEIGHT DOOR CABINET W/ TRAY DIVIDERS (2) EQUALLY SPACED

13-FULL CIRCLE SUPER SUSAN DOUBLE STACK

14-BASE FULL HEIGHT SPICE PULLOUT
 15-WAINSCOT PANEL TO COVER BACK OF ISLAND CABINETS, FURNITURE BASEBOARD IN MATCHING FINISH PROVIDED ALL AROUND



All dimensions _size designations given are subject to verification on job site and adjustment to fit job conditions.

CHRIS ANN SULLIVAN JACKSON KITCHEN DESIGNS

This is an original design and must not be released or copied unless applicable fee has been paid or job order placed.

Designed: 12/12/2019
 Printed: 12/12/2019